

**BRICK**  
MANAGEMENT + LETTINGS



Apartment, 4 Holly House Eden Grove, Staines-Upon-Thames, TW184ZN

£1,450 Per month



## Apartment, 4 Holly House Eden Grove, Staines-Upon-Thames, TW184ZN

**£1,450 Per month**

New to the market, this impressive newly built ground floor one bedroom executive apartment is located in the sought after Berkeley Homes Eden Grove development.

The property itself benefits from an entrance hall with a large utility / storage cupboard leading to an open plan living area with Karndean wooden flooring and private terrace, stylish kitchen with integrated appliances, double bedroom with fitted wardrobe, luxury bathroom, secure video phone entry system and neutral decoration throughout.

Residents have access to an on site 24 hour concierge service, co-working facility with private meeting room, large gymnasium, cinema room, internal courtyard garden and bike storage.

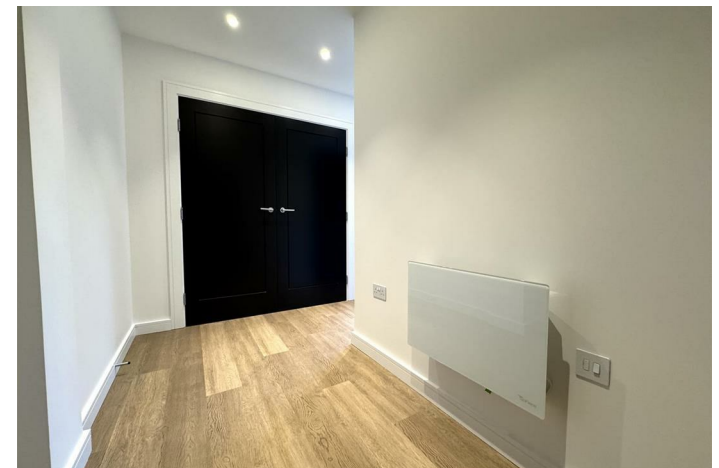
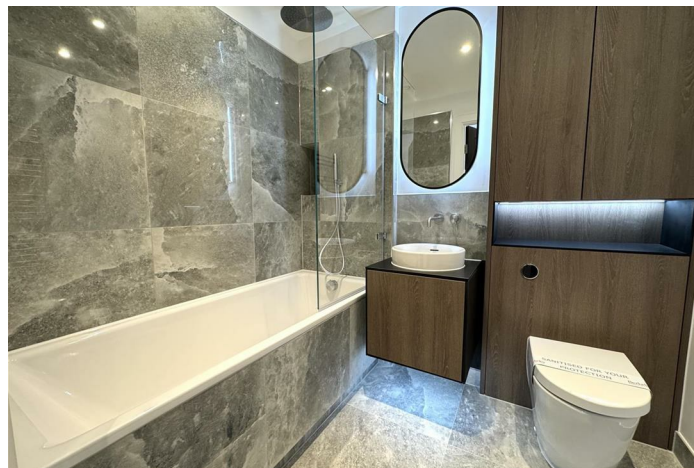
\* Sorry this property does not come with allocated parking. There are private options available locally if required, and a Car club / electric vehicle charging on site if needed. \*

Eden Grove is just a five minute walk from Staines town centre and the mainline railway station. The M25 is a five minute drive away, offering easy access to Heathrow Airport.

## Description



## Situation



Unfurnished

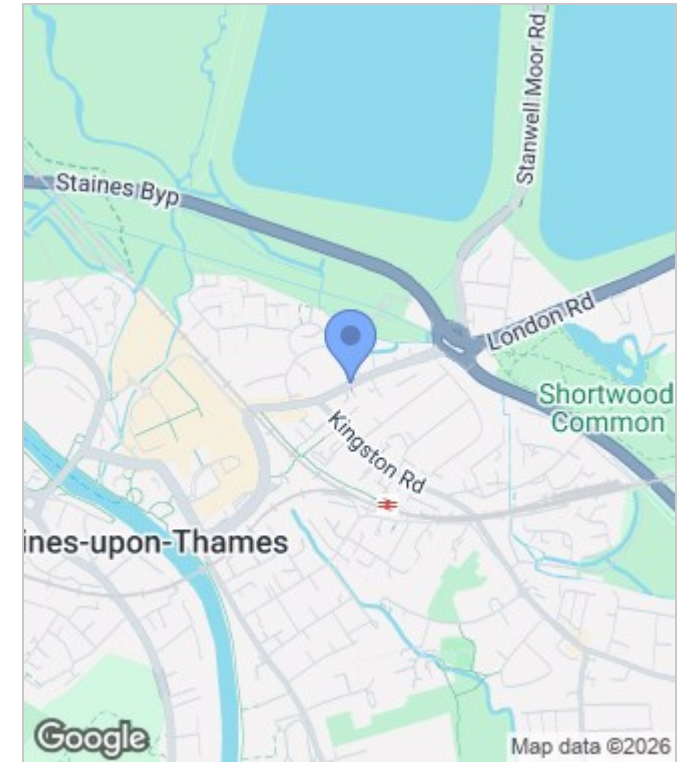
Council Tax Band: C

Available: 5th May 2026

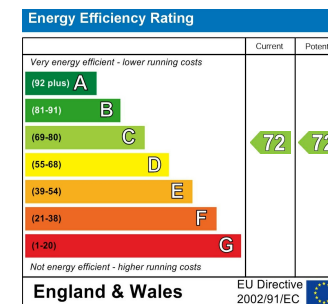
## Floor Plans



## Area Map



## Energy Performance Graph



These particulars, whilst believed to be accurate are set out as a general outline only for guidance and do not constitute any part of an offer or contract. Intending purchasers should not rely on them as statements of representation of fact, but must satisfy themselves by inspection or otherwise as to their accuracy. No person in this firm's employment has the authority to make or give any representation or warranty in respect of the property.